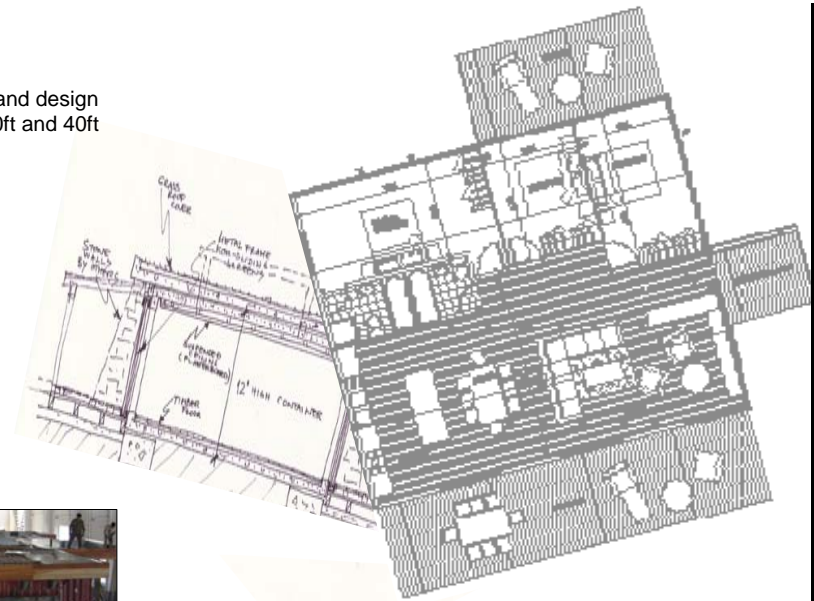


Hurricane Proof Homes that arrive on a truck ready to live in.

- * Designed to meet local regulations
- * Any configuration of room layout possible
- * Up to 12 ft high ceilings
- * Flat roof with roof balcony or pitched supplied as a kitset
- * Quick assembly due to modular construction
- * Pre-fitted with plumbing and electrical system
- * Luxury or budget builds

Step 1 : Concept and design layout based of 20ft and 40ft blocks



Tectainer Products Inc:

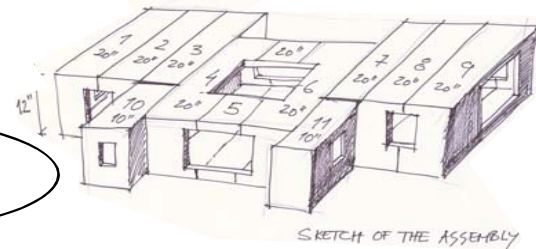
- Bulk Containers
- 20ft and 40ft Full Opening Side Door Containers
- Waste-management Containers
- Open-top, GPs & Flatracks
- LPG T50 tanks
- 27 tonne Bitumen tanks
- 28,000 Itr Lubricant & Oil Tanks
- 70 m3 Petrochem storage Tanks
- 26,000 Itr tank containers



Step 2 : 4000 sq ft pre assembled in the factory



Step 6: Separate and ship internationally to site



Step 3: The fit-out using the finest materials



Step 4: Fit the windows



Step 5: Build kitset balconies

Step 7: Re-assemble on site and finish.
(NB Of course foundations are required to be prepared when the house arrives)



The fully clad finished product

